

INTRODUCTION

Within this publication we have attempted to provide as much information on the sport of tug of war as we think most people will require.

At the beginning you will find a short history of our sport which goes back a very long time. As a sport we have come through many phases including the early 1900's which encompassed participation in no less than five Olympic Games. Not too many people outside tug of war realize that.

For those who may be merely thinking about joining or even starting a team you will find links to those who will be able to assist you. Likewise, if you live in a country where tug of war is already practised but there is not already an organized structure or Association you will find information in this booklet which should be helpful. The Tug of War International Federation officials listed within will welcome your approach and assist in any way possible with appropriate advice. We have recently amended the rules required for membership, with the objective of making it easier for new countries wishing to join.

Competitors and officials will be interested in the updated rules for competition and, hopefully, in the wealth of other information contained within these pages.

To all of you who read this booklet may you find it a useful resource and a means of furthering your enjoyment of what I consider a wonderful sport.

Cathal McKeever

President TWIF

MISSION STATEMENT:

As an International Federation our mission is to provide the structure and good governance necessary for the well-being and development of the sport of tug of war throughout the world.

Our Primary Objective is to attain a sufficiently high level of excellence and universality to expedite our acceptance by the International Olympic Committee as a sport within the programme of the Olympic Games, a status held by our sport in the early years of the 20th century.

Contents

INTRODUCTION.....	1
HISTORY OF TUG OF WAR.....	ERROR! BOOKMARK NOT DEFINED.
INTERNATIONAL TUG OF WAR ORGANIZATION.....	11
NATIONAL TUG OF WAR ORGANIZATION	12
NATIONAL STRUCTURE OF SPORT ORGANIZATION.....	13
TWIF ADDRESSES	14
MEMBER ASSOCIATIONS.....	15
TWIF CONSTITUTION.....	17
RULES OF TUG OF WAR INTERNATIONAL FEDERATION.....	23
RULES FOR INTERNATIONAL COMPETITION	27
RULES FOR ADVERTISEMENTS NATIONAL TEAMS.....	45
TERMS OF REFERENCE COMMITTEES / COMMISSIONS	47
OFFICIALS INTERNATIONAL COMPETITIONS	52
TWIF JUDGES PANEL	59
TWIF TIMEKEEPER /RECORDERS PANEL.....	60

HISTORY OF TUG OF WAR

Ancient origin

There is no specific time and place to pinpoint the origin of Tug of War. The contest of pulling on the rope originates from ancient ceremonies and cults, which are found all over the world e.g.; Egypt, Burma, India, Borneo, Japan, Korea, Hawaii and South America. The ancient Tug of War was performed in various styles. In Afghanistan, teams used a wooden stake instead of a rope to pull. In Korea, children clasped their arms around each other's waists to form a living Tug of War chain. Team captains must have had a very strong grip linking the teams together with their hands. Tug of War was not only a team sport; in several countries a man to man version of Tug of War existed. The Canadian Eskimos still have a Tug of War contest known as "arsaaraq". It's a Tug of War contest with the pullers sitting on the ground, using a short rope. The one who pulls his opponent over from his seated position is the winner.

Tug of War as sport contest

Later, Tug of War became a pure contest of physical strength. In Greece, the cradle of the ancient Olympic Games, Tug of War sport around 500 BC was practised by athletes either as a competitive sport or as an exercise in the physical training for other sports. In western Europe evidence of Tug of War is found in the year 1000 AC, in the stories of the heroic champions of Scandinavia and Germany, who participated in the so called "kräftige spiele" (power games). The Tug of War sport featured in competitions at the courts of the Chinese Emperors, as well as in Mongolia and Turkey. In the 15th century Tug of War was a popular contest at the tournaments in the French chateaux and in competitions in Great Britain.

Olympic period

The Tug of War sport featured in the Olympic Games from 1900 to 1920. The medal winners during that period were;

Year	Venue	Gold	Silver	Bronze
1900	Paris	Sweden	USA	France
1904	St. Louis	USA	USA	USA
1908	London	Great Britain	Great Britain	Great Britain
1912	Stockholm	Sweden	Great Britain	
1920	Antwerp	Great Britain	Netherlands	Belgium

In 1920 the IOC took a decision to reduce the number of participants of the Olympic Games and for that reason deleted a number of team sport from the programme, including Tug of War. In 1999 TWIF received provisional IOC recognition again, which was confirmed in 2002 into formal recognition in accordance with rule 29 of the Olympic Charter.

National Tug of War Associations

The discontinuation of the Tug of War as an Olympic discipline fortunately did not put an end to the Tug of War sport. All over the world Tug of War remained a sports activity. Within the Athletic Associations, Tug of War was still an athletic discipline and

HISTORY OF TUG OF WAR

on sport festivals Tug of War was a popular inter-village competition. Within National Athletic Associations the Tug of War discipline, being a non-Olympic discipline, did not have the first priority. The Tug of War teams therefore felt the need to establish a separate and independent organization for the Tug of War sport. The eldest national association in Tug of War is the Svenska Dragkamp Förbundet, the Swedish Tug of War Association, founded in 1933. The example of Sweden was followed by other countries; in 1958 by the Tug of War Association of Great Britain and one year later, in 1959, by the Netherlands Tug of War Association.

Foundation of TWIF

After Tug of War was no longer on the programme of the Olympic Games, the opportunity to participate in international competitions had disappeared. With the foundation of National Tug of War Associations, the need for international competition developed simultaneously. The initiative to form an international federation was taken in 1960 by George Hutton of the Great Britain Association. In co-operation with representatives from the Swedish Association, the idea was brought into reality

TWIF Competitions

The first international competition of the new federation was staged at the Baltic Games in 1964 (Malmö, Sweden). The Tug of War International Federation, TWIF, participated with four countries; Great Britain, Sweden, Netherlands and Denmark. After the international competition in the Baltic Games, TWIF organised in 1965 its first European Championship in Crystal Palace, London Great Britain. From that year on, with regular intervals, European Championships were staged until 1975, when countries from outside Europe affiliated to TWIF, resulting in the first World Championship in the Netherlands. Currently TWIF organises World Championships every two years. Continental Championships are organised in the intervening years.

HISTORY OF TUG OF WAR

TWIF affiliation to International Federations

The Tug of War International Federation, TWIF is a full Member of the General Association of International Sport Federations, GAISF and the Association of Recognised International Sports Federations, ARISF. The TWIF is also a founder member of the International World Games Association, IWGA.

World Games

Tug of War has been on the programme of all World Games events. TWIF participates with three weight classes on the programme. World Games medal winners since 1981 are the following.

Year	Venue	Men	Women	Gold	Silver	Bronze
1981	Santa Clara USA	720		Switzerland	Netherlands	England
		640		England	Switzerland	Netherlands
1985	London UK	720		Rep. Ireland	Switzerland	England
		640		Rep. Ireland	England	Switzerland
1989	Karlsruhe Germany	720		England	Switzerland	Rep. Ireland
		640		Switzerland	Rep. Ireland	England
1993	The Hague Netherlands	720		Switzerland	Rep. Ireland	Germany
		640		Switzerland	Rep. Ireland	Spain
1997	Lahti Finland	720		Netherlands	Sweden	Rep. Ireland
		640		Spain	Switzerland	Rep. Ireland
2001	Akita Japan	680		Netherlands	Switzerland	Sweden
		600		England	Scotland	Japan
2005	Duisburg Germany	680		Netherlands	Sweden	Rep. Ireland
		640	520	Switzerland Chinese Taipei	Sweden Japan	Germany Netherlands
2009	Kauhsiung Chinese Taipei	680		Netherlands	Switzerland	Great Britain
		640	520	Switzerland Chinese Taipei	Germany Netherlands	Netherlands Great Britain
2013	Cali Colombia	700		Netherlands	Switzerland	Sweden
		640	540	Switzerland Chinese Taipei	Great Britain Netherlands	Germany South Africa

HISTORY OF TUG OF WAR

TWIF Recognised by IOC

In July 1999 TWIF was provisionally recognized by the International Olympic Committee.

During the 113th Session of the International Olympic Committee in Salt Lake City, USA from 4 – 6 February 2002, TWIF has been granted formal recognition by the IOC pursuant to rule 29 of the Olympic Charter.

HISTORY OF TUG OF WAR

INTERNATIONAL TUG OF WAR ORGANIZATION

Management of the Tug of War sport

The organizational structure of the Tug of War International Federation is a non-complex set-up. The central point is the Congress and administered by an executive body, the Executive Committee. The main activity of the Executive Committee is focused on the technical aspects of the organization of international competitions. Managerial aspects such as budgeting and planning however are becoming more and more important, in particular the promotion and the public relations of the sport.

TWIF Congress

TWIF is an assembly of national Tug of War Associations. The highest authority in the TWIF therefore is the Annual Congress. TWIF Congress is the meeting of all affiliated members associations of TWIF. The TWIF Congress elects the TWIF Executive Committee.

TWIF Executive Committee

The Executive Committee is the administrative body of TWIF. It manages all TWIF affairs and represents TWIF in international organizations.

TWIF Commissions

To assist the Executive Committee in the discharge of its work, TWIF has appointed six Commissions and two advisors.

- Technical Commission
- Medical / Doping Commission
- PR and Promotion Commission
- TUE (Therapeutic Use Exemption) Commission
- Athletes Commission
- Appeal Commission
- ICT Information Technology Advisor
- Legal Advisor

NATIONAL TUG OF WAR ORGANIZATION

Recognition by National Sports organizations

A national Tug of War association needs to be recognized by its National Olympic Committee or National Sports Organisation as a requirement for affiliation to TWIF. As a newcomer in the Tug of War sport, the relation between the Tug of War Association and the national sport administrations is very important for the development of a national Tug of War organization. If required TWIF will assist in achieving the required contacts.

Organisation structure

The management structure in the affiliated member associations of TWIF varies widely. There is however one particular similarity in the structure of the Tug of War Associations. Tug of War is pre-eminently a team sport, so the Tug of War Associations are primarily Assemblies of Clubs.

General Meeting of Clubs

The General Meeting of clubs is the highest authority in a national association. In some countries the association is subdivided in regions or districts, depending on the number of affiliated clubs and the geographic situation. A President or Chairman heads the national Tug of War association. The Annual General Meeting elects the Executive Committee, including the President.

Executive Committee of National Associations

Management of the daily affairs of the Tug of War sport is done by the Executive Committee, when required assisted by Commissions. These Commissions are established by the Executive Committees to deal with specific items such as; competitions, judging, training courses and public relations. Regional Committees, where applicable, are in charge of the daily affairs of the regions or districts.

National Council

Some associations have formed a Council with representatives from the Regional Committees, the Commissions and the Executive Committee. Council Meetings take place every 4 or 6 months and deal mainly with the general policy of the Tug of War sport, while the Executive Committee meetings are held more frequently and deal with the day to day affairs of the Tug of War sport association.

NATIONAL STRUCTURE OF SPORT ORGANIZATION

National sport structures

The organization of the sport in the various countries is not identical; mostly three major administrations are involved;

- National Olympic Committee
- National Controlling Sports organization
- Department of Sport (Government)

National Olympic Committee (NOC)

All countries have a National Olympic Committee (NOC). Since TWIF has been granted the Olympic Recognition, several National Olympic Committees (NOC's) have recognized the National Tug of War Association. However, as it is up to the NOC's to recognise a national association, not all NOC's have accepted the national tug of war association. In recent meetings of the Association of National Olympic Committees (ANOC), the IOC has invited the NOC's to recognise the national associations of Olympic Recognised Sport Federations.

National Controlling Sports organization

In most countries the national sport is managed by a non-government "umbrella" organization. These non-government sports organizations have different names in the various countries, but are generally known as the National Controlling Sports organizations. There is a trend that the national controlling sports organizations are co-operating - or even merging with the NOC's.

Affiliation to national sports organization

The affiliation to the National Controlling Sport Body is of particular importance for a national Tug of War association in order to become eligible for financial support from these organizations. However the significance of affiliation is not limited to the financial assistance only, the know-how of the national sports body is of great value to the management of national Tug of War associations.

Support from Department of Sport (Ministry of Sport)

In some countries the Ministry of Sport supports the sport either directly or renders financial support via the National Controlling Sports organization. In some countries regional and/or local authorities financially support the sport on regional or club level, especially through the provision of sports facilities and in the assistance to youth sport activities.



TWIF ADDRESSES

administrative headquarters.

mailing address Tug of War International Federation
PO Box 77
4742 State Hwy 213
Orfordville WI 53576-0077
United States of America

Telecom

tel 1 608 879 2869

fax

e-mail twif@t6b.com

Website

www.tugofwar-twif.org

twif executive committee

president Mr. Cathal McKeever
22 Annahugh Road
LOUGHGALL
Co. Armagh BT61 8PQ
Northern Ireland U.K.

tel 44 2838 891 661

e-mail cmckeever@sky.com

secretary general Mr. Glen Johnson
PO Box 77
4742 State Hwy 213
Orfordville WI 53576-0077
United States of America

tel 1 608 879 2869

fax

e-mail twif@t6b.com

senior vice-pres. Mr. Tony Martin
39 Wellsprings Road
Longlevens
Gloucester GL2 0NL
England U.K.

tel 44 1452 532 788

fax 44 1452 532 788

e-mail tonymartin@blueyonder.co.uk

vice president Maaïke Hornstra
Lytse Dyk 2
9028 BD Jellum
Netherlands

Tel 31 582519739

Mobile 31 6 23271158

Email 10cc@hetnet.nl

Maaïkehornstra396@hotmail.com

treasurer Mr Anton Rabe
PO Box 163
Paarl 7620
South Africa

tel 27 21 870 2900

Fax 27 21 870 2915

Email anton@hortgro.co.za



*Honorary
life president*

Mr Co Koren
(*non Executive post*)
Slot Aldeborglaan 33
6432 JM Hoensbroek
Netherlands

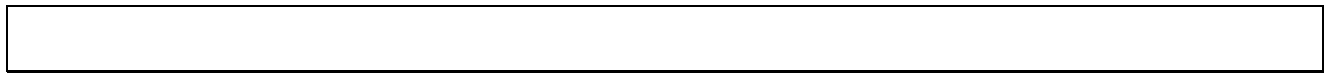
tel 31 563 1089
fax 31 563 1079
e-mail cokoren@ziggo.nl

MEMBER ASSOCIATIONS

MEMBER ASSOCIATIONS

Please check TWIF website (www.tugofwar-twif.org) for up-to-date addresses and telecom data of national representatives

		Member
1	AUS	Australia
2	BEL	Belgium
3	BRU	Brunei Darussalam
4	CAB	Cambodia
5	CAM	Cameroon
6	CAN	Canada
7	CHI	Channel Islands
8	CHN	People's Rep. Of China
9	CZE	Czech Republic
10	ENG	England
11	FRA	France
12	GER	Germany
13	GRE	Greece
14	HKG	Hong Kong China
15	IND	India
16	IRI	Iran
17	IRL	Ireland
18	ISR	Israel
19	ITA	Italy
20	JPN	Japan
21	KEN	Kenya
22	KOR	Korea
23	LAO	Lao-DRP
24	LAT	Latvia
25	LTU	Lithuania
26	MAC	Macau
27	MAL	Malta
28	MRI	Mauritius



29	MGL	Mongolia
30	MOR	Morocco
31	NAM	Namibia
32	NEP	Nepal
33	NED	Netherlands
34	NGR	Nigeria
35	NIR	Northern Ireland
36	PAK	Pakistan
37	PHI	Philippines
38	POL	Poland
39	RUS	Russia
40	RSA	South Africa
41	SCO	Scotland
42	SER	Serbia
43	SIN	Singapore
44	SRI	Sri Lanka
45	BAS	Basque
46	SWE	Sweden
47	SUI	Switzerland
48	TPE	Chinese Taipei
49	TUR	Turkey
50	UKR	Ukraine
51	USA	United States
52	VIE	Vietnam
53	WAL	Wales
54	ZAM	Zambia
55	MYA	Myanmar
56	SLE	Sierra Leone
57	EST	Estonia
58	ROU	Romania
59	COL	Colombia
60	DOM	Dominican Republic
61	GHA	Ghana
62	BRA	Brazil
62	HUN	Hungary
63	COG	Democratic Rep of Congo
64	THA	Thailand
65	ZWE	Zimbabwe
66	MYS	Malaysia
67	GMB	Gambia

TWIF CONSTITUTION

ARTICLE 1 - Founding

The Tug of War International Federation is an Amateur Federation founded in 1960, further referred to as "TWIF". It is affiliated to the General Association of International Sports Federation and follows the Olympic Principles in its activities.

ARTICLE 2 - Interpretation Clause

In interpreting the Constitution and Rules of the Tug of War International Federation; the following definitions apply:

- a) "The Associations" refers to the National Associations in control of Tug of War in their respective countries.
- b) "Member" means a National Tug of War Association, which is in membership of "TWIF".
- c) "British Associations" refers to the Associations of the United Kingdom, i.e. the English Tug of War Association, the Scottish Tug of War Association, the Welsh Tug of War Association, the Northern Ireland Tug of War Association and the Tug of War Association of the Channel Islands
- d) "Executive" refers to the Executive Committee of TWIF.

ARTICLE 3 - Objects and General Provisions

The objective and purpose of TWIF is:

- (1) To encourage, promote and control International Competition between Members. To work together to develop world-wide competition in Tug of War and to strive for the re-inclusion of the sport in the Olympic Games.
- (2) To develop and intensify friendship and co-operation between the Association and all their Members.
- (3) To set up Rules for Tug of War to ensure uniformity of control; to hold courses and examinations to set up International Panels of Tug of War Judges and Timekeeper Recorders.
- (4) To regulate and control exclusively on the technical and sporting basis, World Championships, Continental Championships and International Competitions on the programme of major multi-sport event such as the World Games and the Olympic Games.

ARTICLE 4 - Headquarters

The Headquarters of the TWIF shall be determined by Resolution of Congress. For the time being it shall be in Lucerne in Switzerland and can be transferred to another country by a two-third-majority vote of Congress.

ARTICLE 5 - Members

- (1) The TWIF shall consist of affiliated Members, which are recognized as the only Association controlling Tug of War in their respective Countries.
- (2) The Association in Membership with TWIF shall recognize each other as the ONLY Associations controlling Tug of War in their respective countries, to the exclusions of all others.

ARTICLE 6 - Congress

Congress, which is the highest power of TWIF, is formed by the affiliated Members. Each Member Association may be represented by two delegates, one being the International Representative of the Member Association.

ARTICLE 7 - Congress Power

TWIF Congress will have the power:

- a) To decide on the affiliation of new Members.
- b) To elect the Executive.
- c) To elect Special Committees and Commissions.
- d) To change the Rules of Competition of TWIF.
- e) To change the Constitution and the Rules of TWIF.
- f) To decide on the Suspension and Expulsion of Members and the Dissolution of TWIF.
- g) To decide on special funds and fees.

ARTICLE 8 - Quorum

The Quorum necessary for holding Congress is one third of the Affiliated Members in good standing. If fewer members attend, only a Meeting of the Members can be held, without the powers of Congress.

ARTICLE 9 - Voting - Election

Voting.

Each Affiliated Member in good standing has one vote only. Unless otherwise specified in this Constitution, voting of Congress and within the Executive Committee must be approved by a simple majority (e.g. 50% + 1) of the valid votes taken. If the result of voting is equal, the Presiding Officer may give the casting vote. Voting by proxy is permitted. If either time or situation do not allow for the organization of an Extraordinary Congress, the Executive may hold a voting by letter.

Election.

Elections will be by secret ballot.

ARTICLE 10 - Extra-ordinary Congress

The Executive Committee may, at any time, and must at the written request of two-thirds of the Members, in good standing, of TWIF, call an Extra-ordinary Congress.

ARTICLE 11 - The Executive Committee

- (1) The following officials shall be elected by the Members and appointed to act as the Executive:
 - a) President
 - b) Senior Vice President

-
- c) Vice President
 - d) Secretary General
 - e) Treasurer
- (2) The duration of their appointment shall be four years. After this period the officials can be re-elected by Congress.
 - (3) When, during the period mentioned in paragraph 2 of this Article, an official resigns from the Executive or is no longer available to act as an official, the Executive may appoint an official to act in the vacant office for the duration of the period until the next Annual Congress.

ARTICLE 12 - Executive Committee Powers

- (1) The Executive Committee is the Administrative Body of TWIF. It manages the affairs of TWIF according to the Rules and it represents TWIF at all occasions. It has to prepare the Annual Congress and report its activities to Congress. The Executive can appoint interim officials in case of resignation of officials.
- (2) The Executive proposes the assignment of a Legal Advisor and/or Arbitrators, if necessary, the assignment of the legal advisor and arbitrators shall be approved by Congress.
- (3) The Executive can, when needed for a special task or liaison, co-opt up to a maximum of two (2) officials, whose term of office will end on the termination of the special task or liaison.
- (4) The Executive Committee is empowered to suspend or expel Clubs and/or Individuals from participation in international tug of war, when Clubs and/or Individuals are liable of action bringing the tug of war sport into disrepute.
- (5) Appeals against decisions and rulings passed by the Executive Committee shall be lodged within 21 days with the TWIF Appeals Commission.

ARTICLE 13 - Committees and Commissions

The Committees and Commissions necessary shall be proposed by the Executive and elected by Congress.

ARTICLE 14 - Affiliation Fee

The Affiliation Fee is payable in the first month of the year. A member, who does not pay the affiliation fee for the current year, will not be allowed to take part in TWIF Championships until the affiliation fee is fully paid.

ARTICLE 15 - Fees

The rules may stipulate the fees necessary for the financial needs of TWIF such as the Permit Fees for International Competitions.

ARTICLE 16 - Financial Year

The Financial Year shall run from 1st November until 31st October. The finance of TWIF shall be vested in the Executive. The Treasurer will submit certified accounts and balance sheet to the Annual Congress.

ARTICLE 17 - Auditors report

The Treasurer will submit the Accounts and Balance Sheet, three months prior to Congress to a firm of Chartered Accountants for their inspection and they in turn, will submit a written report (Auditors report) on their inspection to Congress.

ARTICLE 18 - Resignations, Suspensions and Expulsions

Resignation: A Member may resign at any time provided that at the time of resignation the Member has no outstanding liabilities to the Federation and is at the time a fully paid-up Member. Such resignation shall take effect immediately upon receipt by the Secretary General of a Notice of Resignation signed by two Members of the Executive Committee of the Member and shall be reported at the next Annual Congress by the Secretary General.

Suspension:

- (1) The Congress is responsible for suspending members, clubs and/or individuals by a recommendation of the Executive Committee and a 50% +1 majority decision of votes taken of the Annual Congress.
- (2) Decisions taken by Congress supersede any disciplinary actions taken by an individual member association.
- (3) The Executive Committee may, with immediate effect, suspend members, clubs and/or individuals that seriously violate its obligation as a member or through its/their actions bring the sport into disrepute.
- (4) Suspension pronounced by the Executive Committee shall last until the next Annual Congress unless the Executive Committee has lifted it in the meantime. Such suspension shall be confirmed at the next Congress by a 50% + 1 majority of votes taken. If the suspension is not confirmed by the Congress, the suspension is automatically abolished.
- (5) A suspended member, club, and/or individual shall lose its/their membership rights.
- (6) Other members, clubs, or individuals may not entertain sporting contact with suspended members, clubs or individuals.

Expulsion: A member may be expelled from Membership of the TWIF on a resolution passed by a 75% majority of the Federation Members present at an Annual Congress or an Extra-ordinary Congress specially convened, for the following reasons:

- a) Refusal to pay any liabilities due to TWIF.
- b) Refusal to comply with the provisions of these Articles.
- c) Persistent action liable to bring the sport of tug of war into disrepute as agreed by the Executive Committee.

ARTICLE 19 – Court of Arbitration for Sport (CAS)

- (1) TWIF recognises the Independent Court of Arbitration for Sport (CAS) with headquarters in Lausanne, Switzerland, to resolve disputes between TWIF, Members, clubs and individuals.
- (2) The provisions of the CAS Code of Sports-Related Arbitration shall apply to the proceedings. CAS shall primarily apply the various regulations of TWIF, and additionally, Swiss law.
- (3) Appeals against decisions and rulings passed by the TWIF Appeals Committee or Congress shall be lodged with CAS within 21 days of notification of the decision in question.

-
- (4) Recourse may only be made to CAS after all other internal channels have been exhausted.
 - (5) CAS however, does not deal with appeals rising from:
 - (a) violations of the rules of the tug of war sport
 - (b) suspensions for up to 2 Indoor and/or Outdoor TWIF Championships whatever may be applicable to the particular incident or dispute
 - (6) The appeal shall not have a suspensive effect.
 - (7) Any costs associated with the appeal to CAS shall be borne by the party lodging the appeal.

ARTICLE 20 - Obligation

- (1) Members and clubs shall agree to recognise CAS as an independent judicial authority and ensure that their members, officials and individuals comply with the decisions passed by CAS.
- (2) Recourse to ordinary courts of law. In matters associated with transgressions against articles and clauses contained in the TWIF Constitution and Rules is prohibited until internal remedies and appeals procedures as listed within the constitution and rules have been exhausted. These remedies include referral to CAS.
- (3) To ensure the foregoing, Members shall insert a clause in their statutes stipulating that their clubs and individuals are prohibited from taking a dispute to ordinary courts of law until all internal remedies referred to in (2) above have been exhausted.

ARTICLE 21 – TWIF Appeal Commission

Term of office:

Shall be 4 years coinciding with the 4 year cycle of the ExCo term of office.

Composition:

- (a) The Commission will consist of 3 members
- (b) The TWIF Legal Advisor will serve as Chairman of the Commission
- (c) Members in good standing will nominate and Congress will appoint 2 members and 2 alternates to serve on the Commission.

Terms of Reference & Procedures:

- (a) The Commission is responsible for hearing appeals against decisions of the Executive Committee that have not been confirmed by Congress. Any appeal must be lodged within 21 days
- (b) The Commission may determine the procedures to be followed during the appeal process on a case by case basis.
- (c) The Commission shall pass decisions only when at least 3 members (of which the Chairman/Legal Advisor must be one) are present.
- (d) The Commission will announce its ruling/decision via the normal TWIF communications and circulars to all members.
- (e) Any party wishing to appeal to the Appeal Commission shall deposit an amount equal to 3 x the annual membership affiliation fees at the time, with the TWIF Treasurer before any appeal process will be initiated.
- (f) If the appeal is lost, the deposit will be retained by TWIF to cover the costs associated with the appeal and the Appeal Commission.
- (g) If the appeal is upheld, the deposit will be returned. TWIF will however not cover any expenses (travel, legal or otherwise) of the Appellant.



ARTICLE 22 – Interpretation of Constitution and Rules

In case of a dispute arising from interpretation of the Constitution or Rules, the TWIF legal advisor, when so requested by the Executive or two Members, has to be consulted before any decision is taken by Congress.
For any dispute in these matters, the English text shall apply.

ARTICLE 23 - Modifications

Modifications of any Articles of this Constitution may only be effected by the Annual Congress or an Extra-ordinary Congress convened especially for that purpose. The majority has to be 75% at any ballot.

ARTICLE 24 - Special Provisions - Non-Amateurs and Professionals

The Tug of War International Federation, as the Controlling body for Tug of War throughout the World may, if Congress approves, and without prejudice to the foregoing Articles, take under its jurisdiction and control non-amateurs and professionals. Non-amateurs and professionals shall be subject to special registration with TWIF which means they will be listed in the Records of Control with TWIF.

ARTICLE 25 - Dissolution

The intended dissolution of TWIF shall require an Extra-ordinary Congress at which sole item on the Agenda shall be the business of dissolution. The quorum for dissolution shall be 75% of the Membership and the vote for dissolution shall require a majority of 75% of the Voting Members present.
If, upon dissolution of the Federation there remains after satisfaction of all its debts and liabilities, any property whatsoever, the same shall not be paid to or distributed among Members of the Federation, but shall be applied to the furtherance of any object or objects as may be determined by the Federation, at or before the dissolution, and, in so far as effect cannot be given the foregoing provisions, then to some charitable object.

ARTICLE 26 - Any Other Matters

Any other matters, which are not covered by the Constitution, Rules and Rules of Competition of TWIF, must be referred to the Executive Committee prior to any discussion being allowed by Congress.

ARTICLE 27 - Date of Acceptance and Inception

These Articles making up this Constitution were approved by the Annual Congress at Engelberg, Switzerland, on 14 May 1983 and came into force immediately.
Amended by the Annual Congress at Drogheda, Rep of Ireland on 11 April 1992
Amended by the Annual Congress at London, England on 24 April 1993
Amended by the Annual Congress at Rochester, USA on 18 April 1998
Amended by the Annual Congress at Cento, Italy on 21 April 2004
Amended by the Annual Congress at Cape Town, South Africa on 7 May 2005
Amended by the Annual Congress at Minehead, England on 6 May 2006
Amended by the Annual Congress at Stenungsund, Sweden on 12 May 2007
Amended by the Annual Congress at Amsterdam Netherlands on 26 April 2008
Amended by the Annual Congress at Pretoria South Africa on 2 May 2009

RULES OF TUG OF WAR INTERNATIONAL FEDERATION

ARTICLE 1 - Affiliations

A National Tug of War Association wishing to affiliate to TWIF must send to the Secretary General the following documents:

- A written request for affiliation signed by TWO Members of its Executive.
- A statement that its Constitution and Rules for Tug of War are in compliance with the TWIF Constitution and Rules.
- A statement certifying that it is the only Controlling Body for Tug of War in its Country.

ARTICLE 2 - Affiliation Fee

The annual affiliation fee shall be paid in the currency of the Treasurer's choice. The annual affiliation fee for Members shall be determined by Annual Congress.

ARTICLE 3 - Congress

Members shall be represented at Congress by representatives of their own Association who will give proof of their membership, and also of their appointment to attend Congress. These members must be of the nationality or citizenship of the country they represent and their credentials must be sent to the Secretary General of TWIF by letter prior to the date of the Congress. Before the opening of Congress the Secretary General of TWIF will verify the credentials of the delegates to the Congress. Any cases of doubt will be referred to the Executive. All sessions of the TWIF Congress are private.

ARTICLE 4 - Agenda

The Agenda for Annual Congress shall include the following items:

- (1) An Address by the President
- (2) The appointment of Scrutineers
- (3) Confirmation of the Minutes of the previous Congress
- (4) Matters Arising
- (5) Report covering the period since the previous Congress
- (6) Submission and vote on the Balance Sheet and Accounts
- (7) Affiliation of New Members
- (8) Proposals and questions submitted by Members and all other matters which the Executive Committee wishes to propose
- (9) If required, the election or re-election of the Members of the Executive
- (10) Reports from Commissions appointed by Congress
- (11) Approval of budget for the next year
- (12) Any other business for the good of TWIF

ARTICLE 5 - Standing Orders for Congress of TWIF

- (1) The date, time and place of Congress must be notified to Members, by letter from the Secretary General, posted at least four months in advance.

-
- (2) All proposals and questions submitted to Congress by the Member Associations must be sent by letter to reach the Secretary General of TWIF not later than the 1st of January of the year of the Congress.
 - (3) The Agenda specifying the nature of the business to be discussed by Annual Congress, a copy of the Accounts and Report of the Financial Inspection Committee will be sent to the Associations two months before the date of the Congress.
 - a) No proposal passed or failed can be brought forward to be put on the agenda for two years unless brought forward by the Executive. (Congress April 1987)
 - (4) The place, date and time and the Agenda for an Extra-ordinary Congress must be notified at least three weeks before it takes place.
 - (5) Only those items included in the Agenda will be discussed by Congress.
 - (6) The President of TWIF shall take the chair at Congress.
 - (7) The President shall ensure the strict application of the present Standing Orders. He shall open and adjourn the Sessions and Debates, unless the Congress should decide otherwise, give permission to speak and conduct the proceedings. The President will open and close the Congress with an Address to Members of TWIF.
 - (8) The President shall maintain order at Congress and may propose to Congress penalties to be inflicted on those Members who interfere with the proper procedure of the discussions, or are guilty of misconduct towards their colleagues.

The penalties shall be:

 - a) A call to order;
 - b) Censure;
 - c) Exclusion from the Meeting
 - (9) In the case of an appeal, Congress shall decide immediately and without debate.
 - (10) The Secretary General will be responsible for the Minutes.
 - (11) At the beginning of Congress, Scrutineers will be appointed to count votes for and against, whenever a vote is taken.
 - (12) Official Interpreters will be allowed as necessary.
 - (13) The Secretary General shall be responsible for recording the debates.
 - (14) Each discussion shall be opened by statement:
 - a) By the President, or by the Executive to act for him/her, if the item in question has been placed on the Agenda by the Executive.
 - b) By the representative of the Member responsible for the inclusion of that item on the Agenda.

The general discussion will then open.
 - (15) The right to speak shall be granted in the order in which it is requested. No speaker shall start speaking before he has permission to do so. A speaker cannot obtain permission to speak a second time if a Member who has not yet spoken requests permission. The President will decide the number of speeches allowed to delegates and their duration.
 - (16) If a Motion for Adjournment is proposed, discussion on the main question shall be suspended until a vote has been taken on the Motion.
 - (17) All amendments to proposals shown on the Agenda shall be drawn up in writing and passed to the President before being put to the debate.
 - (18) If proposal is made to close the discussion, it must immediately be put to the vote without debate.

-
- (19) If motion (as at 18) is approved, permission to speak shall however be granted only to those Members who have requested the right to speak before the vote was taken. As a general rule, the President shall close the discussion unless Congress shall decide otherwise by a simple majority of those voting.
 - (20) Decisions of Congress will come into force after publication, which has to be executed within sixty days.

ARTICLE 6 - Voting and Elections

Voting -

Members in good standing are entitled to ONE vote only. The vote shall be by a show of hands (voting cards). No-one shall be compelled to vote. Before each vote the President shall read aloud the text of the proposal and explain to Congress the method of voting. In case of an appeal, Congress shall decide it immediately. Proposals must be put to the vote in the order in which they are submitted. If there are more than two main proposals they shall be put to the vote in succession and no Member of Congress may vote for more than one of the proposals. Amendments to amendments shall be put to the vote before the amendments, and amendments before the main proposal. Proposals which are not contested shall be considered as adopted. The President shall verify the results of the voting and announce them to Congress.

No-one may obtain permission to speak during voting and until the result has been announced by the President.

Voting by Proxy -

The Proxy vote has to be sent to the Executive by letter prior to the date of Congress. It has to indicate clearly how the proxy has to vote on the different subjects on the Agenda. It has to be verified by the Secretary General.

Voting by Letter -

The Executive having decided on voting by letter, mails a bulletin with the subjects to be voted on to the Members in good standing indicating the date by which the vote has to be returned. Voting taken by letter must be approved by a simple majority. They have to be repeated at the next Annual or Extra-ordinary Congress. If not approved, they are considered null from then on.

Elections -

All Elections shall be carried out by secret ballot, by means of the ballot papers. The distribution and count of the ballot papers shall be done by the Secretary, assisted by the Scrutineers.

The number of ballot papers issued shall be announced by the President before the count.

If the number of ballot papers returned is equal to or less than that of the ballot papers issued, the vote shall be valid. If the number exceeds that of the ballot papers issued, the vote shall be declared null and void and another vote shall be taken. Blank or cancelled papers may not be included in the count.

Voting by simple majority is sufficient, for the election of Members. The President shall announce the result of each vote to Congress. The ballot papers returned shall be retained until the last count has been verified and then destroyed immediately afterwards. Committees (with the exception of the Executive) and Commissions are considered elected until revoked by Congress.

ARTICLE 7 - The Executive

During their term of office, Members of the Executive will not be eligible to act as delegates for their own Associations. The Executive may, for its belongings, always vote by letter sent to the Headquarters. The Executive may bind TWIF by joint signatures by two of its Members.

ARTICLE 8 - Duties of the President

- a) The President may attend World Championships, Regional and European Championships and other major events for Tug of War, and his/her expenses shall be paid by TWIF when finance permits.
- b) The President, or any person acting in his/her place, may represent TWIF at a meeting of the International Olympic Committee and the General Association of the International Sports Federations, and report on such meetings at the next Congress.
- c) The President or any other person appointed by him/her shall take a principal part in the opening and closing ceremonies at the World and other Championships and he may present the Awards to the winning competitors.

ARTICLE 9 - Finance

- (1) All financial transactions shall require the signature of the Treasurer and one other member of the Executive.
- (2) The Treasurer will maintain an amount equal to £ 3000,- or such sum as agreed by Congress in a working Current Account. Funds in excess of this amount will be transferred to a Hard Currency Account.

ARTICLE 10 - Budget

The Treasurer has to submit to Congress a Budget for the coming year which, if approved, has to be executed with a tolerance of 25%. To exceed the tolerance up to 100% the Treasurer has to be backed by a unanimous vote of the Executive.

ARTICLE 11 - Television and Broadcasting

- a) The rights of television and broadcasting, video taping or filming the World Championships, Regional or European Championships and other major International Contests under the control of TWIF are the property of TWIF.
- b) All fees involved will be decided and negotiated by the President in consultation with Members of the Executive Committee and representatives of the host country.

RULES FOR INTERNATIONAL COMPETITION

DEFINITIONS AND SPECIFICATIONS

1 TUG OF WAR SPORT

Tug of War is a sport practised by teams who are bona-fide members of the National Tug of War Associations affiliated to TWIF. The participants must be amateurs, as approved by TWIF, and they will adhere to the Rules and Directions as laid down by the Tug of War International Federation.

2 CATEGORIES

- (a) In International Tug of War competitions the following categories are recognized.
- Outdoor and Indoor
Men and Women
Senior, Under 23 and Junior
Mixed 4x4 Male & Female
- (b) TWIF organises each year a World Championships for Junior categories women and men

3 WEIGHT CLASSES

In all International competitions the following team weights will apply:

World (W) European (E) Indoor (I.) Outdoor (O.)		
Ultra Featherweight	not exceeding	480 Kilos Junior Women (I.O.) W.
Featherweight	not exceeding	500 Kilos U23 Women (I.O.) W
Light weight	not exceeding	500 Kilos Senior Women (I.O.) W.
Light Heavyweight	not exceeding	520 Kilos Senior women (O.) E
Heavyweight	not exceeding	540 Kilos Senior Women (I.O.) W.
Heavyweight	not exceeding	560 Kilos Senior Women (O.) E
Lightweight	not exceeding	560 Kilos Junior Men (I.O.) W
Lightweight	not exceeding	560 Kilos Senior men (I.) W..(O.) E.
Lightweight	not exceeding	580 Kilos Senior Men (O.) W.
Light Middleweight	not exceeding	600 Kilos U23 Men (I..) W.
Light Middleweight	not exceeding	600 Kilos Senior Men (I.) W
Middleweight	not exceeding	640 Kilos Senior Men (I.O.) E.W.
Cruiserweight	not exceeding	680 Kilos Senior Men (I.) W. (O.) E
Heavyweight	not exceeding	700 Kilos Senior Men (O.) W.
Heavyweight	not exceeding	720 Kilos Senior Men (O.) E.
Catch weight	no weight limitations	
Mixed (4 x 4)	not exceeding	600 Kilos Senior Mixed (I.O.) W

4 WEIGHING AND STAMPING

1. All athletes first collect accreditation, having prepaid.
2. All potential pullers must weigh at a pre-determined time schedule.

-
3. An accreditation download will be carried out listing all athletes from a particular country. Accessible only by the controller and the appointed representative of a particular country.
 4. The athlete will weigh on an individual scale. The number of scales to be determined by the organizers and TWIF. Only one weigh in on the official scales.
 5. After weighing the athletes the weight will be recorded in an excel spreadsheet, and also hand written on the downloaded excel file as a back up.
 6. The athlete will be given his or her certified weight. The athlete can then give his or her weight to the coach of the team.
 7. Open Clubs entries
The coach of a particular club entering in the TWIF clubs competition will bring a completed weigh list to control at a predetermined time. The weigh list shall contain the name, accreditation number and the weight of each puller, totalling the adequate weight of a particular weight class. Eight pullers, coach and trainer only.
 - 7.1 **A coach may change any and all pullers prior to and up until stamping, as long as the maximum weight for that particular weight class is not exceeded. Changes must be reported to control by the coach 30 minutes before stamping begins.**
 8. National team weigh in.
The coach of a national team may choose any pullers that are listed and weigh from the downloaded excel file from his/her country.
 - 8.2 **A coach may change any and all pullers prior to and up until stamping , as long as the maximum weight for that particular weight class is not exceeded. Changes must be reported to control by the coach 30 minutes before stamping begins.**
 9. The coach of a particular national team will present a completed weigh certificate to control at a predetermined time schedule.
 - 10 Control shall enter teams in a draw for a particular weigh class, after checking the weight & accreditation numbers against the completed excel downloaded list.
 11. Scanners/ Bar code readers at designated areas to control substitutions, and team weight checks throughout the competitions.

5 AGE LIMITS

5.1 Junior category

A puller is eligible to participate in the junior category from the beginning of the year in which the puller reaches the age of 15 years until the end of the year in which the puller reaches the age of 18 years.

5.2 Under 23

A puller is eligible to participate in the under 23 category from the beginning of the year in which the puller reaches the age of 18 years until the end of the year in which the puller reaches the age of 22 years.

5.3 Senior

A male puller is eligible to participate in the senior category from the beginning of the year in which the puller reaches the age of 18 years.

A female puller is eligible to participate in the senior category from the beginning of the year in which the puller reaches the age of 16 years.

6 Teams and Substitutions.

6.1 Number of pullers in a team

Teams shall consist of eight pulling members at the start of the competition. The contest will have deemed to have commenced when both teams are in a position to pull under the direct supervision of the judge.

6.2 Members national team

Members of a national team must be citizens of the country the team is representing. Proof of citizenship is only accepted by passport or by a national government issued identification card. Members of the team includes pullers, coach and team attendant.

6.3 Conditions for using a substitute

The substitute may replace any one puller for the duration of the competition. After the substitution has taken place, no other such changes may occur.

Substitution may be used for tactical reasons or due to injury.

Substitution may only take place after the team has weighed-in, and has finished the first end of the first match it pulls in.

The replaced puller shall not participate in any subsequent matches of that weight-class.

The substitute must be a registered puller of the specific Club or Country for which he/she acts as a substitute.

6.4 Substitution procedures.

Both, the puller to be replaced and the substitute, must report in full pulling outfit, (shirts, shorts, stockings and footwear) with both of their accreditation cards available for checking by the Official in charge of the match; before being sent to the Official designated by the Chief Judge to deal with the substitutions.

6.4.1 Accreditation cards will be used to verify the athletes and their weights, by scanning or typing the accreditation cards into the system.

The substitute puller must be of equal weight or less than the puller he/she replaces. The total weight of the team cannot be increased by the weight of the substitute, even if the team originally weighed less than the maximum weight for that weight class.

Directly after the change, the Chief Judge or designated official shall cancel the stamp or marking of the replaced puller, and indicate a similar marking on the substitute, with an indelible marker. The Chief Judge or the designated official shall note the substitution on the appropriate weight certificate, by adding and deleting the accreditation numbers of the pullers involved with the changes.

6.5 Minimum number of pullers.

A second substitution will not be permitted. Should a second injury occur, the team is allowed to continue with seven pullers. A team is not allowed to continue a competition with less than seven pullers.

7 COACH / TRAINER

Each team may have a team coach to direct their pulling.

One trainer for each team is also allowed. The trainer's function is to take care of his team before and after pulls. He is not allowed to communicate to his/her team whilst



they are pulling and must take up position as directed by the judge in charge of the match.

8 SPORT EQUIPMENT

8.1 Sport dress

8.1.1 *Sport dress puller*

Teams will wear proper sports clothing consisting of shorts, sports shirt or jerseys and knee-stockings or socks. The sport dress of the pullers in the teams shall be uniform.

8.1.2 *Sport dress coach and team attendant*

Coach and team attendant of a team will wear either the same proper sports dress as the team or will wear proper tracksuit which shall conform to the colour(s) of the sport dress of the teams

8.1.3 *Headgear*

Pullers, coach and team attendant are allowed to wear the following headgear; cap, visor or bandanna. The headgear shall conform to the colour(s) of the sport dress. *Exemption; Headgear such as turbans or other such headgear may be allowed according to religion or culture. This would be decided on a case by case basis*

8.1.4 *Protective clothing*

Clothing to protect the skin may be worn under the sport clothing subject to judge's approval. Protective belts are only permitted if worn over the sport clothing. The protective clothing worn by the anchor shall not exceed a maximum thickness of 5 centimetres; it must always be worn under the sport clothing and placed between the rope and the body. No hooks, grooves or other constructions intended to lock the rope are allowed on any of the protective clothing. Recommended Anchor vest (see page 43)

8.2 Resin

Resin is allowed to facilitate the grip on the rope and the use is restricted to the hands only. In **indoor** competition resin may only be used when authorisation is obtained to utilise resin in the sports hall; if permitted to use resin in the sports hall it shall be applied under the directions of the judges only.

8.3 Dress at weigh-in

Men-teams may weigh-in in proper sized non-transparent shorts only.

Women-teams may weigh-in in proper sized non-transparent shorts and shirts only.

Boots need not be carried or worn on the scale during weigh-in.

8.4 Shoes

8.4.1 *Outdoor shoes*

The sole, heel and side of the heel must be perfectly flush. No metal sole, toe caps or toe plates are permitted. Spikes and protruding nails from the soles or heels of the boot are not permitted. The fastening of the shoe shall not consist of any protruding clips which might cause injuries. A metal heel plate with the maximum thickness of 6, 5 mm that is flush on the side and bottom of the heel is permitted. The size of the heel should not constitute more than one third of the entire sole area, nor less than

one quarter. The depth of the heel as measured from the sole should not be less than 6.5 mm and not more than 25 mm. (Including the plate.) (See page 41)

8.4.2 Indoor shoes

The shoes to be used for indoor tug of war should be as originally produced by any sport shoe manufacturer. The sole may be adapted but, should not be wider or longer than the upper part of the shoe. The sole should be made of rubber or such material as to give optimum grip but not cause damage to the pulling surface or floor. The maximum length and width of the sole must not exceed the 'bare foot' measurement of the puller by more than 20%. The only material or substance which may be applied to the sole of the shoe is a clean dry cloth which must be devoid of any chemicals or fluids..

Championship controlling Officials shall arbitrate in matters of dispute.

9 ROPE SPECIFICATIONS

9.1 Rope dimensions

The rope must not be less than 10 centimetres (100 mm), or more than 12.5 centimetres (125 mm) in circumference, and must be free from knots or other holdings for the hands. The ends of the rope shall have a whipping finish. The minimum length of the rope must not be less than 33.5 metres.

9.2 Rope marking

The tapes or markings shall be affixed so that they are easily adjustable by the judge in the event of the rope stretching or shrinking.

9.2.1 Rope marking *outdoor*

Five tapes or rope markings shall be affixed as follows:

- a) one (1) tape or marking at the centre of the rope
- b) two (2) tapes or markings each four (4) metres on either side of the centre marking.
- c) two (2) tapes or markings each five (5) metres on either side of the centre marking.
- d) markings listed in (a),(b) and (c) shall be in three different colours.

9.2.2 Rope marking *indoor*

Three tapes or rope markings shall be affixed as follows:

- a) one (1) tape or marking at the centre of the rope
- b) two (2) tapes or markings each two and a half (2.5) metres on either side of the centre marking
- c) markings listed in (a) and (b) shall be in two different colours

10 PULLING AREA AND MARKINGS

10.1 Outdoor pulling area and marking

The pulling area shall be flat, level grass covered surface. One centre line shall be marked on the ground.

10.2 Indoor pulling area and marking

The pulling surface shall be made of a material that will give sufficient friction to normal indoor sports shoes and is approved by TWIF.

The recommended length of the pulling surface will be 36 metres. The recommended width of the pulling surface will be 100 - 120 centimetres

One centre line and two side lines four (4) metres on either side of the centre line shall be marked on the pulling surface/floor.

PULLING TECHNIQUES RULES

11 ROPE GRIP

No competitor shall grip the rope within the length bounded by the outer tapes or markings. At the commencement of each pull the first pulling member shall grip the rope as close as possible to the outer tape or marking.

No knots or loops shall be made in the rope, nor shall it be locked across any part of the body of any member of the team. Crossing the rope over itself constitutes a loop. At the start of a pull, the rope shall be taut with the centre rope marking over the centre line marking on the ground.

12 PULLING POSITION

With the exception of the Anchor, every pulling member shall hold the rope with both bare hands by the ordinary grip, i.e. the palms of both hands facing up, and the rope shall pass between the body and the upper part of the arm. For hold of Anchor see Rule 13.

Any other hold, which prevents the free movement of the rope, is a Lock and is an infringement of the Rules. The feet must be extended forward of the knees and team members should be in a pulling position at all times.

13 ANCHOR 'S POSITION

The end puller shall be called the Anchor. The rope shall pass alongside the body, diagonally across the back and over the opposite shoulder from rear to front. The remaining rope shall pass under the armpit in a backward and outward direction and the slack shall run free. The Anchor shall then grip the standing part of the rope by the ordinary grip; i.e. the palms of both hands facing up, with both arms extended forward. **The Anchor is allowed to keep the rope below the level of the protective clothing and contact with the belt for safety considerations will not constitute a Lock.**

INFRINGEMENTS OF THE RULES

14 INFRINGEMENTS DURING COMPETITION

14.1 Infringements General

- | | | |
|---|---------|---|
| 1 | Sitting | deliberately sitting on the ground, or failure to return immediately to the pulling position after slipping |
| 2 | Leaning | touching the ground with any part of the body other than the feet |
| 3 | Locking | any hold which prevents the free movement of the rope |
| 4 | Grip | any grip other than the ordinary grip as described in Rule 11, 12 |

	and 13
5 Propping	holding the rope in a position where it does not pass between the body and the upper part of the arm
6 Position	sitting on a foot or a limb or the feet not extended forward of the knee
7 Climbing the rope	passing the rope through the hands
8 Rowing	repeatedly sitting on the ground whilst the feet are moved backwards
9 Anchor Position	any other than the position described in Rule 13
10 Trainer	trainer communicating to his team whilst they are pulling
11 Inactivity	teams failing to actively engage in a competitive effort during a pull, leading to a prolonged stalemate, which could bring the sport into disrepute, constitute a “No pull”, which can be called at any time. <i>The pull will be restarted, and will continue for this match, on either new or less broken ground in the immediate proximity of the original pulling lane. This match <u>will not</u> be allowed to return to the original pulling lane. If a pull with periods of inactivity lasts longer than ten minutes, the Chief Judge will draw the attention of the Centre Judge to call a “No pull”.</i>
12 Side-Stepping	stepping outside the pulling track, lane or surface to gain an unfair advantage

14.2 Infractions during outdoor competitions

13 Footholds	making indentations in the ground in any way before the command “Take the Strain” is given
--------------	--

15 DISQUALIFICATION

Teams will receive two (2) cautions for infractions of the Rules in any one (1) pull, before being disqualified. For all infractions of the Rules, a team may be deemed guilty if only one person offends.

16 BREACH OF THE RULES

Failure to comply with any of the Rules for International Competition may obviate teams from competing.

COMPETITION MATCHES AND SCORES

17 MATCHES, PULLS AND REST PERIOD

A points competition consists of $(n \times (n-1) \div 2)$ matches, in which n is the number of teams in the competition. Each match consists of two (2) pulls.

A reasonable rest will be granted between pulls.

A maximum of six (6) minutes may be claimed between matches, beginning when a team leaves the arena and ending when a team is in the marshalling area ready to re-enter the arena.

18 TOSS

Before pulling commences the choice of ends will be decided by the toss of a coin. After the first pull, the teams will change ends. If a third pull is necessary, the choice of ends will again be decided by the toss of a coin.

19 WINNING A PULL

19.1 Winning a pull general

A pull is won by a team either by moving the rope the required distance as indicated by the markings or through the disqualification of the other team by the judge.

19.2 Winning pull outdoor

A pull is won when one of the side markers on the rope is pulled beyond the centre line marking on the ground.

19.3 Winning pull indoor

A pull is won when the middle marker on the rope is pulled beyond the side marking on the floor.

20 SCORE

20.1 Point's Competition

A team winning a match by two (2) pulls to nil will score three (3) points, the losing team will score no (0) points. Teams winning one pull each; each team will score one (1) point.

20.2 Pull-off's, Semi Finals and Finals

Matches will be won by two (2) pulls out of three (3). A team winning a match by two (2) pulls to nil (0) will score three (3) points, the losing team scoring no (0) points. A team winning a match by two (2) pulls to one (1) will score two (2) points, the losing team scoring one (1) point

21 NO PULL

A "No Pull" will be declared in the event of;

- a) both teams being guilty of infringements; after twice being cautioned
- b) both teams being guilty of inactivity
- c) both teams leaving go of the rope before the finish of a pull
- d) a pull being interrupted without infringement by either of the teams

When a "No pull" is declared in the case a), b) or c), no rest period will be granted and the pull shall be retaken immediately and without any aid or service. When a "No pull" is declared in the case of d) a reasonable rest period will be granted.

JUDGING

22 OFFICIALS AND JUDGES

Officials shall be appointed by the Tug of War International Federation to have control of all international competitions.

The final selection of judges for international competition shall be the responsibility of the Technical Commission.

23 POWERS OF REFEREE, CONTROLLER AND CHIEF JUDGE

In case Clubs and/or Individuals at an event are liable of action of bringing the tug of war sport into disrepute, the Referee, Controller and the Chief Judge, in coordination with each other, are empowered to expel the club and/or individuals from further participation during the event. The Referee shall prepare a report to the TWIF ExCo, which in accordance with Article 12 of the Constitution might take further disciplinary action against the club and/or individuals

24 POWERS AND RESPONSIBILITIES OF THE JUDGE

The appointed judge for a match shall have sole control.

He shall be responsible for ensuring:

- (1) that the Rules of "TWIF" are adhered to
- (2) that the rope is laid out ready for competition before the teams arrive in the pulling area
- (3) that, as far as possible, the pre-determined timetable is adhered to.
- (4) grant rest periods as shown in Rule 17
- (5) declare a "No pull"
- (6) disqualify a team or teams after caution.
- (7) a judge may award only 1 friendly caution to a particular team during a pull.
- (8) disqualify a team without caution which he deems to be guilty of ungentlemanly conduct, by word or act, which is likely to bring the sport into disrepute.

In the event of the judge in charge giving a caution, which he will indicate by the common signal code, naming the team and adding "first caution" or "last caution". Any such instructions given by the judge in charge must be clear and brief using the appropriate signals.

The judge's decision shall be final at all times.

25 RESPONSIBILITIES OF SIDE JUDGES

Side judges shall at all times act under the directions of the judge in charge. During the actual pulling the side judge shall take up a position alongside the competing teams and to the opposite side of the judge in charge. The side judge shall observe the competing teams and indicate the infringements of the teams to the judge in charge, using the common signal code. The side judge will inform the offenders of the cautions given by the judge in charge.

26 WEIGHMASTER

In international competitions, stewards may be appointed by TWIF who shall be responsible to the Weigh master (judge in charge of the weigh-in) for correctly weighing and stamping all competitors.

SIGNALS AND COMMANDS

27 THE START PROCEDURE

When the judge has received a signal from the two coaches that all is ready, he shall give the teams the following verbal and visual commands:

- | | |
|------------------|--|
| Pick up the rope | The rope shall then be gripped as defined in paragraphs 11, 12 and 13, the feet being flat on the ground |
| Take the Strain | Sufficient strain being put on the rope to ensure that it is taut. In out- |



door competitions each puller may establish one foothold with the heel or side of the boot with the extended foot

Steady The judge shall then signal the rope to the centre position. When the rope is steady with the centre mark over the centre line on the ground

Pull After a reasonable pause

28 FINISH OF A PULL

The finish of a pull shall be signalled by the judge blowing a whistle and pointing in the direction of the team winning the pull or in the case of a “No pull” crossing his arms and pointing to the centre mark.

29 LIST OF COMMANDS IN TUG OF WAR COMPETITION

COMMAND	SIGNAL
1 Team are you ready	Indicating the team with the arm
2 Pick up the rope	Arms extended in front of the body
3 Take the strain	Arms extended upwards with hand palms inward
4 Rope to centre	Indicating the side which has to move to centre
5 Steady	Arms extended upwards with palms outwards
6 Pull	Flinging arms down to the sides
7 Indicate winner	Blowing whistle and pointing to the winning team
8 Change ends	Blowing whistle and crossing the arms over the head
9 No Pull	Blowing whistle and crossing the arms in front of the body
10 Caution	Raising the arm on the side of the infringing team and indicating by one or two fingers the first or second caution

30 LIST OF COMMON INFRINGEMENTS IN COMPETITION

INFRINGEMENTS	SIGNAL
1 SITTING	moving flat hand horizontally
2 LEANING	open hand horizontal indicating to the ground
3 LOCKING	elbow touching the lifted upper leg
4 GRIP	two fists in front of each other
5 PROPPING	lifting movement with hands along the body
6 POSITION	kicking movement and stretching of the lower leg
7 CLIMBING THE ROPE	climbing movements with the fists
8 ROWING	rowing motion with arm and upper body
9 ANCHOR’S GRIP	with the hand touching the back
10 TRAINER	with the finger touching the lips
11 FOOTHOLDS	kicking with heels in the ground
12 SIDE-STEPPING	side stepping with one foot



COMPETITION STRUCTURE

31 General

The TWIF International Championships competition consists of a qualifying round, semi-finals and finals.

- The qualifying round will be a points competition. For the points competition only one draw shall be made. The draw shall be made in the presence of the appointed delegates to the Tug of War International Federation.
- The qualifying competition will result in four teams entering the semi-finals. The losers of the semi-final matches enter into the pull-off for the bronze medal and the winners of the semi-final matches enter into the final for the silver and the gold medals.

32 Minimum number of teams

A minimum number of 4 teams per weight class are required for participation in World or Continental Championships. If there are not four teams taking part in a particular weight class, it will not be considered a World or Regional Championships

33 Competition with one group

When less than 12 teams have entered in a weight class, all teams will compete in one qualifying points competition.

- The top four teams of the qualifying point's competition will enter into the semi-finals.
- The team in 1st. place will be matched against the team in 4th place and the team in 2nd place will be matched against the team in 3rd place
- The winners of the matches will then compete for the gold and silver medal and the losers will compete for the bronze medal

34 Competition with more than one group

When 12 or more teams have entered in a weight class, the qualifying point's competition will be divided into two groups.

The placing into the groups will be based on the ranking in the previous applicable competitions (regional or world championships)

The teams ranking first and second place after the qualifying points competition will enter into the semi-finals. The teams ranking first in their group will compete against the teams ranking second from the other group. In case, after the qualifying competition, the first two teams in a particular group are equal on points, teams will be ranked in accordance with rule 35.

Policy to standardize the number of teams in a group

less than	4 teams	No competition
4-11	teams	1 group
12-22	teams	2 groups
23-44	teams	4 groups
44<	teams	8 groups



35 Determination of ranking in qualifying competition

In the event that, after the qualifying competition, teams are in contention to enter into the semi-finals the following rules will apply to determine which team(s) will qualify for the semi-finals These rules will also apply to rank teams with equal points in qualifying competition

(1) Result of matches

The team(s) with the best results in the matches between the teams concerned during the qualifying rounds will be first to qualify for participation in the semi-finals.

(2) Matches won

In the case that the results between the teams do not break the tie the team with the most matches won will go to the semi-finals.

(3) Cautions

In case the first 2 options do not break the tie, the team(s) with the least cautions in the qualifying rounds will be first to qualify for participation in the semi-finals. (The number of cautions of a team in a match is the total number of cautions accumulated in the pulls of that match. A team being disqualified in the qualifying rounds will be considered to have accumulated 3 cautions during that pull. In the event of a No-Pull, the cautions given prior to declaring a No-Pull will be accumulated to the total number of cautions of the team in that match. In the case of a No-Pull being declared due to infringements as indicated in rule 21 (a.) both teams will accumulate 3 cautions.)

(4) Team weight

In case the first 3 options do not break the tie, the lightest team(s) will be first to qualify for participation in the semi-final. For this criterion the certified weight on the weighing sheet will be used.

(5) Toss or draw

In case all of the above criteria have not broken the tie, the qualification for participation in the semi-finals will be decided by a coin toss or a draw.

36 Supervision pull-off and draw

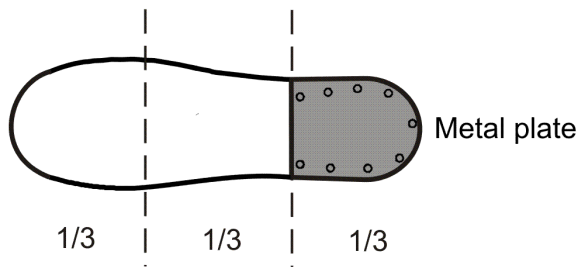
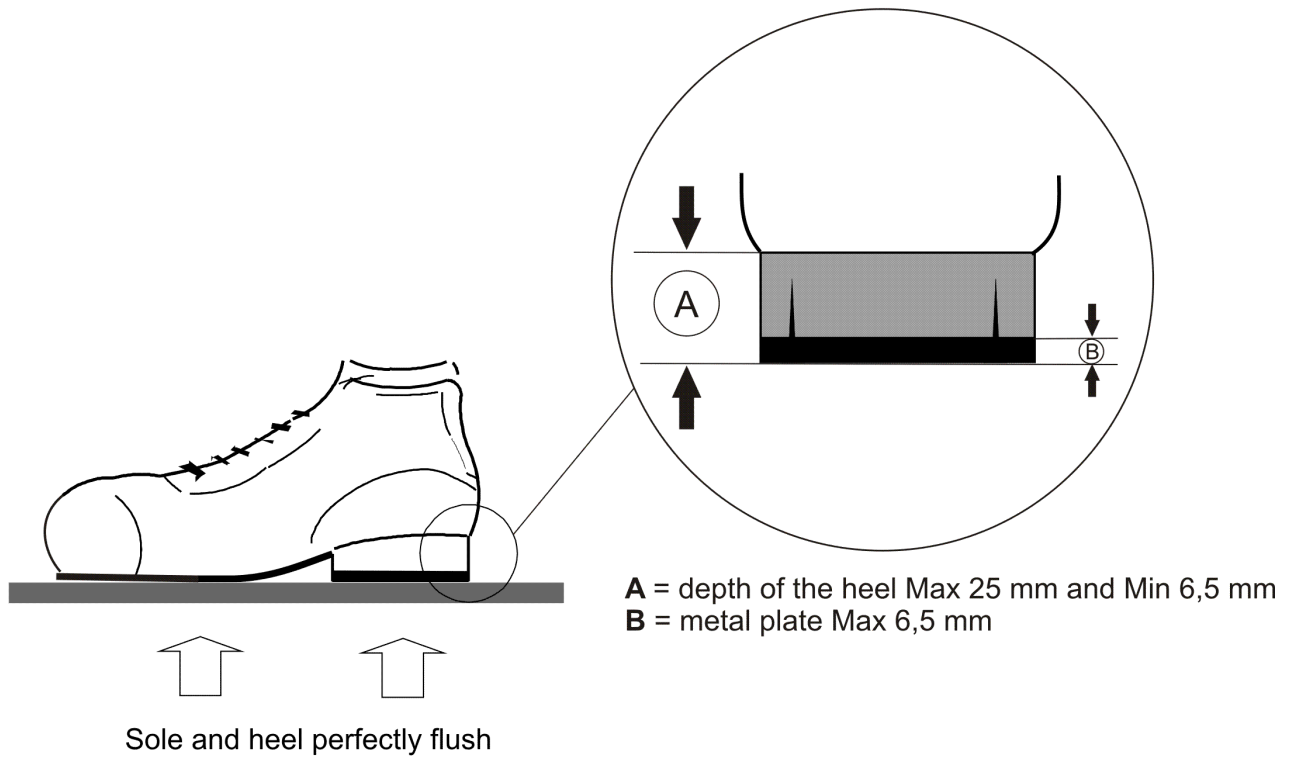
All pull-off's and drawing of lots shall be done under direct supervision of the appointed officials of the competition, these officials shall arbitrate in matters of dispute.

Amendments to Rules for International Competition
Amended by the Annual Congress at

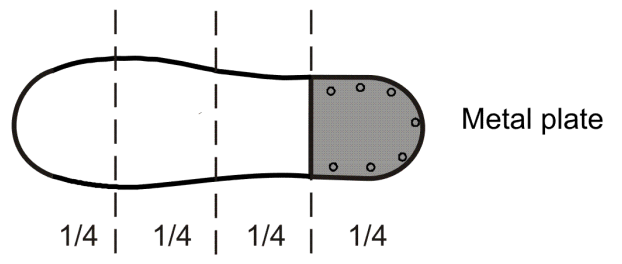
Drogheda	Rep of Ireland	on	11	April	1992
London,	England	on	24	April	1993
Rochester	USA	on	18	April	1998
Mogelsberg	Switzerland	on	6	May	2000
Pretoria	South Africa	on	28	April	2001
Assen	Netherlands	on	27	April	2002
Rochester	USA	on	3	May	2003
Cento	Italy	on	21	April	2004
Capetown	South Africa	on	7	May	2005
Minehead	England	on	6	May	2006
London	England	on	2	May	2010
Appenzell	Switzerland	on	7	May	2011
Belfast	N. Ireland	on	12	April	2014



Attachment 1 Outdoor shoes

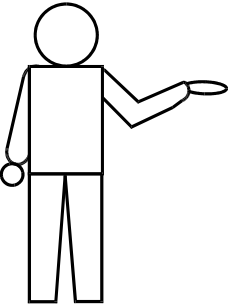
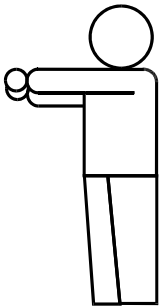
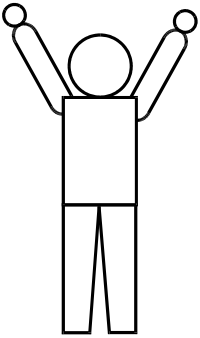
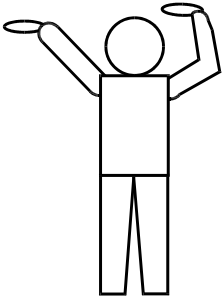
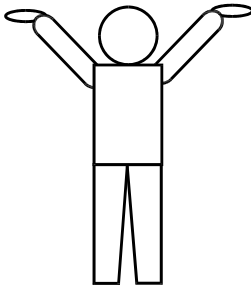
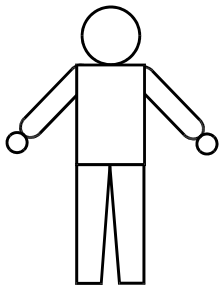
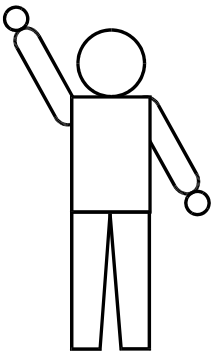
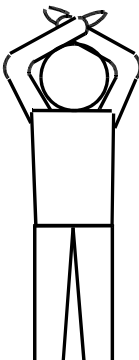
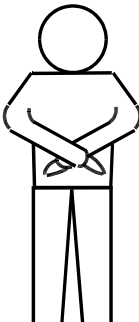
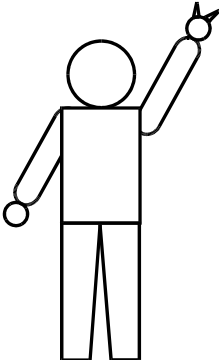


heel is no **more** than 1/3 of total footprint



heel is no **less** than 1/4 of total footprint

Attachment 2 Signals Commands

		
TEAM ARE YOU READY	PICK UP THE ROPE	TAKE THE STRAIN
		
ROPE TO CENTRE	STEADY	PULL
		
INDICATING WINNER	CHANGE ENDS	NO PULL
		
FIRST CAUTION	SECOND CAUTION	

Attachment 3 Signals infringements

		
SITTING	LEANING	LOCKING
		
GRIP	PROPPING	POSITION
		
CLIMBING	ROWING	ANCHORMAN
		
TRAINER	FOOTHOLDS	SIDESTEP

Ref: 8.1.4 Anchor vest



RULES FOR ADVERTISEMENTS NATIONAL TEAMS

1 Conditions for advertisement

A national team may wear advertisements on the competition dress during TWIF Championships under the conditions as mentioned in these rules. A team consists of 8 pullers, its coach and its trainer.

- The use of company and product names is allowed as well as brand names and product groups as long as they do not offend good taste.
- Advertising must not be of a political, religious or ideological nature.
- Product advertising for alcohol, tobacco and drugs is not allowed.
- The use of fluorescent paints is not permitted. This rule applies not only to advertising but also to the material from which the competition dress is made.
- The competition dress has to comply with the rules of the TWIF.
- Advertising on other articles belonging to the competition dress (e.g. shoes, socks, etc.) is not permitted.

2 Dimensions of advertisement areas (See Attachment 4 Pictorial example advertisement)

The maximum dimensions of- and total areas for advertisements on competition dress of a puller is either;

- a letter height of 10 cm when used in the advertisers name or;
- an area of 300 cm², when used as one advertisement area or;
- a total area of 150 cm², when used on maximum three advertisement areas of which two may be of the same advertiser.

The maximum dimensions of- and total areas for advertisements on competition dress of a coach is;

- a total area of 75 cm², on the dress of a coach, who is wearing an identification number with an advertisement area of maximum 75 cm² (See pictorial examples)

3 Identification numbers

The organiser of the Championship is allowed to use the identification numbers at TWIF events for advertisements. These numbers have to be worn by the coach of the team. The advertisement on the numbers is only permitted for one company or brand name and may not exceed the height of 5 cm and a maximum area of 75 cm². The numbers may not be cut, folded or altered.

4 Non liability

The TWIF is neither responsible nor liable for any disputes which should arise from advertising contracts between a TWIF member federation and the advertising companies or sponsors.

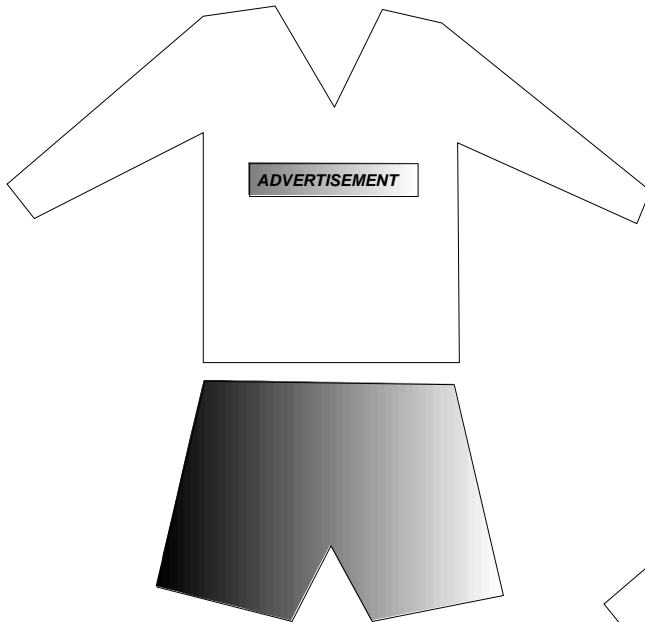
5 Penalty on non-compliance

Non-compliance with these regulations will be dealt with by the TWIF Executive Committee and can be penalised with a fine or a ban on advertising

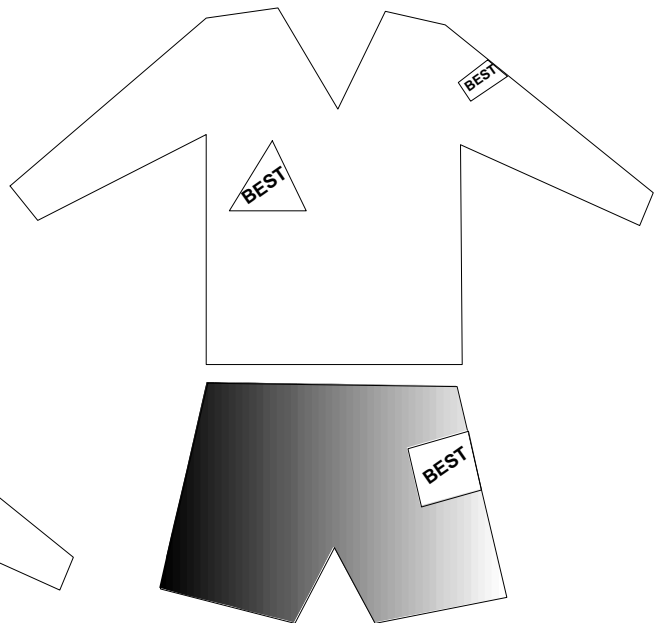


Attachment 4 Pictorial example advertisement

EXAMPLE OF ADVERTISEMENT AREAS ON SHIRTS AND SHORTS



LETTER HEIGHT 10 CM



MAX THREE AREAS TOTAL 150 CM²



ONE AREA MAX 300 CM²

TWIF OFFICIALS

TERMS OF REFERENCE COMMITTEES / COMMISSIONS

1 THE EXECUTIVE COMMITTEE

The members of the Committee are elected by Congress and appointed to act as the Executive.

1.1 COMPOSITION

(Ref. article 11 TWIF Constitution)

The following officials shall be elected by the Members and appointed to act as the Executive:

- President
- Senior Vice President
- Vice President
- Secretary General
- Treasurer

1.2 TERM OF OFFICE

(Ref. article 11 TWIF Constitution)

The duration of their appointment is four years. After this period the officials can be re-elected by Congress. When, during the period mentioned in paragraph 2 of this Article, an official resigns from the Executive or is no longer available to act as an official, the Executive may appoint an official to act in the vacant office for the duration of the period until the next Annual Congress.

1.3 TASK

(Ref. article 12 TWIF Constitution)

The Executive Committee is the Administrative Body of TWIF. It manages the affairs of TWIF according to the Rules. It has to report its activities to the Annual Congress, which it has to prepare also. It represents TWIF at all occasions. The Executive can appoint ad interim officials in case of resignation of officials.

The Executive proposes the assignment of a Legal Advisor and/or Arbitrators, if necessary. The assignment of the legal advisor and arbitrators shall be approved by Congress. The Executive can, when needed for a special task or liaison; co-opt up to a maximum of two (2) officials, whose term of office will end on the termination of the special task or liaison.

1.4 MEETING

The Executive Committee meets at the following occasions;

- at the beginning of the year
- before Congress
- at the world and/or continental championships

TWIF OFFICIALS

2 TECHNICAL COMMISSION

The Commission is an advisory body, at all times responsible to the TWIF Executive and Congress.

2.1 COMPOSITION

The Commission consists of not more than ten and not less than six members, appointed by the Executive Committee, from as wide a spectrum as appropriate.

Member Countries may forward names for consideration by the Executive Committee, prior to the Congress when the appointments will be made. The appointment shall be ratified in conformity with Article 13 of the TWIF Constitution.

The Commission can, when necessary, invite persons to attend the meeting for special advice. Such persons can only address the Commission on request and have no voting rights

2.2 TERM OF OFFICE

The term of appointment to the Commission shall be four years.

2.3 TASK

The Commission shall:

- advise on all matters related to the Rules of International competition.
- advise on any aspect of Tug of War referred to it by the TWIF Executive Committee or Congress
- advise on any matter brought to the attention of the Executive Committee by a Member Association, for which the Executive Committee wishes to have the view of the Commission
- discuss any relevant matter put before the Commission by Commission members, for onward transmission to the Executive Committee
- biannually at World Championships, stage Judges Courses for Grade 1 Judges nominated by Member Associations, where sufficient nominations ensure a viable course
- in conjunction with the above mentioned Judges Courses, stage Refresher Courses for Judges from the TWIF Panel of Judges

2.4 MEETINGS

The Commission will normally meet on the day before Congress and at World- or Continental Championships

The Agenda, including time and venue for the meeting will be dispatched three weeks prior to the meeting

TWIF OFFICIALS

3 PRESS AND PUBLICITY COMMISSION

The Commission is an advisory body, at all times responsible to the TWIF Executive and Congress.

3.1 COMPOSITION

The Commission consists of not more than four members, appointed by the Executive Committee.

3.2 TERM OF OFFICE

The term of appointment to the Commission shall be four years.

3.3 TASK

The Commission shall;

- arrange for the regular publication of the TWIF Magazine
- **arrange for the editing and publishing of the TWIF website on Internet**
- ensure that expenses remain within the allocated budget for press, and publicity
- advise the Executive Committee on matters of press and publicity.

3.4 MEETINGS

The Commission will normally meet at Congress and/or at World or Continental Championships.

The Agenda, including time and venue for the meeting will be dispatched three weeks prior to the meeting.

TWIF OFFICIALS

4 MEDICAL COMMISSION / ANTI DOPING

The Commission is an advisory body, at all times responsible to the TWIF Executive and Congress.

4.1 COMPOSITION

The Commission consists of three members with adequate expertise in the domain of the Commission, appointed by the Executive Committee. The appointment shall be ratified in conformity with Article 13 of the TWIF Constitution.

The Commission can, when necessary, invite persons to attend the meeting for special advice. Such persons can only address the Commission on request and have no voting rights

4.2 TERM OF OFFICE

The term of appointment to the Commission shall be four years.

4.3 TASK

The Commission shall;

- advise the Executive Committee on all matters regarding doping control
- arrange for the correct doping control procedure, in co-operation with the doping control authority of the host country
- report to the Executive Committee on the result of the doping control after the competition
- ensure that the correct procedure is performed in case(s) of positive test(s)
- advise the Executive Committee on any sport medical matter for which the Executive Committee has requested advice from the Commission

4.4 MEETINGS

The Commission will normally meet at Congress and/or at World or Continental Championships

The Agenda, including time and venue for the meeting will be dispatched three weeks prior to the meeting.

5. Appeal Commission

The Appeal Commission is responsible for hearing appeals against decisions of the Executive Committee that have not been confirmed by Congress. Composition and terms of reference are indicated in Article 21 of the TWIF Constitution.

The appointed TWIF Legal Advisor is the Chair of the Commission.

TWIF OFFICIALS

6. ATHLETES COMMISSION

The commission is an advisory body, which is at all times responsible to the Executive Committee and Congress.

6.1 Composition

The Athletes Commission shall be appointed by the Executive Committee from as wide a spectrum as appropriate. Member Countries may forward names for consideration by the Executive prior to Congress when appointments will be made. The composition of the commission is as follows: Male and female members, from each of the following regions: Africa, Asia, Europe and North America. The Chairperson shall be an Executive member preferably and active athlete.

6.2 Term of Office

The term of appointment to the Commission shall be 4 years in line with other TWIF Commissions.

6.3 Task

The Commission shall:

- Advise on all matters relating to athletes in our sport.
- Advise on ways to improve the sport, which will be beneficial to the athletes.
- Discuss any relevant matters put forward before the Commission by commission members and forward these matters to the TWIF Executive.

6.4 Meetings

The Commission will normally meet every 2 years at World Outdoor Championships. However matter can be discussed by e-mail in between meetings, or by conference calls.

7. TUE (THERAPEUTIC USE EXEMPTION) Commission

The TUE Commission is appointed in accordance with article 4.3.2 of the TWIF Anti Doping Rules. The Commission consists of a panel of three physicians, headed by the chair of the panel.

TWIF OFFICIALS

OFFICIALS INTERNATIONAL COMPETITIONS

Note: The Controller, Referee and Chief Judge have, in in coordination with each other, the power to expel teams and/or individual from participating in an event in accordance with Powers of Officials as indicated page 36

1 CONTROLLER

The Controller is responsible for the overall running of events and works in close liaison with the Chief Judge and Referee. The Controller will normally be the Secretary General of TWIF

1.1 TASK

The Controller shall:

- examine, before commencing an event, the Weigh-in Forms of the teams entered for the event, presented to him by the Weigh master, in order to check that the teams have passed the scales and signed the appropriate section, committing the team to strict adherence to the TWIF Rules for Competition.
- ensure that full information is announced by public address system throughout the event, giving particular emphasis to changes in timing of the start of a particular weight class and ensure that teams entered such weight class are fully aware of such changes
- ensure that Draw Sheets are distributed to TWIF Officials (officiating Judges, Marshal's and Timekeeper/Recorders) and team coaches in the event
- ensure that Medals and Awards are available for presentation and that teams and spectators are informed of the time of the presentation.
- select Timekeeper/Recorders for World and Continental Championships
- brief the Timekeeper/Recorders prior to the competitions.

2 REFEREE

The Referee is responsible to deal with matters of dispute and undiscipline not related to the pulling and works in close liaison with the Controller and the Chief Judge. The Referee will not officiate as Judge at any of the competitions

2.1 TASK

The Referee shall:

- ensure that complainant(s) present any major issue of dispute in writing, stating the nature of the complaint and in the case of breach of the TWIF Rules, the relevant rule or directive
- ensure that appointed Stewards will keep unauthorized persons outside the pulling arena whilst the competition is in progress
- assist the Chief Judge in ensuring that all competition are completed with minimum delay
- confirm, in consultation with the Chief Judge, the necessity to move the rope to fresh ground, when appropriate.

TWIF OFFICIALS

3 CHIEF JUDGE

The Chief Judge has authority over the entire pulling arena and works in close liaison with the Controller and the Referee.

3.1 TASK

The Chief Judge shall;

- arrange the 'lay-out' of all ropes for competition and ensure that the ropes are correctly marked
 - brief all Judges and Marshals prior to the competition
 - allocate Judges their respective ropes in competition
 - deal with matters of dispute and indiscipline related to pulling and refer all other matters of dispute or indiscipline to the Referee
 - arrange breaks for officiating Judges to leave the arena for a meal
 - decide to move ropes to fresh grounds when appropriate
- ensure that Marshals have teams lined up at the entrance of the arena in time and ready for the competition

4 WEIGHMASTER

(ref. article 25 TWIF Rules)

In international competitions, stewards may be appointed by TWIF who shall be responsible to the Weigh master (judge in charge of the weigh-in) for correctly weighing and stamping all competitors.

The Weigh master is responsible for all weigh-in matters and works in close liaison with the Controller and Chief Judge

4.1 TASK

The Weigh master shall;

- check the accuracy of the (digital/electronic)scales
- arrange, in consultation with the host country, the setting up of the scales
- provide the stamps for marking of the competitors
- appoint Judges to assist at the weigh-in
- allocate Judges to scales as well as Judges to check the competitors boots
- arrange that the teams are marshalled to the scales
- ensure that team coaches sign the appropriate section of the Weigh-in Form, committing the team to compete in strict adherence to the TWI F Rules
- check, where appropriate, the passport of the competitor to confirm age
- inform the Chief Judge on the marks on the competitors legs and/or arms
- ensure that all Weigh-in Forms have been handed to the Controller
- take decisions, in case of dispute between competitor and Judge checking the boots
- note the name(s) of competitors whose boots have been determined to be illegal and ensure that they will be rechecked before starting the competition
- consult the Referee in case boots are still illegal after rechecking at the start of the competition
- close the scales at the appointed time
- consult with Controller and Chief Judge when there are mitigating circumstances which merit weigh-in of (a) teams(s) after the scales are closed.

TWIF OFFICIALS

5 CHIEF MARSHAL

The Chief Marshal shall ensure that throughout the competition, teams are timely assembled at the entry point(s) of the arena ready to march with the judges in charge to the rope

5.1 Task

The Chief Marshal shall:

- Attend all briefings.
- Approach organisers and appoint Marshals.
- Co-ordinate with the Controller and the Chief Judge prior to the start of the competition to arrange the order of the competition.
- Brief Marshals before the start of the competition and allocate them to their respective marshalling corners / areas
- Appoint one Marshal to be in charge of each corner / area.
- Issue bibs to Marshals and collect the bibs at the close of each day of competition.
- Liaise with the Controller and the Chief Judge throughout the competition to ensure smooth running of the programme.
- Distribute draw sheets to each corner / area.
- Arrange that athletes are marshalled to the scales during weigh-ins
- Ensure all teams are marshalled ready for prompt start of competition.
- Liaise with Control and Organisers to have necessary teams ready for Parade and Presentations.
- Organise teams in marshalling area for the pull-offs and finals in co-ordination with the Chief Judge.
- Inform the Controller throughout the competition – of the instructions of the Chief Judge on what ropes are to be used and where pull-offs are to take place.

6 JUDGES

(ref. article 22 TWIF Rules)

The final selection of judges for international competition shall be the responsibility of the Technical Commission.

6.1 TASK CENTRE JUDGE

(ref. article 24 TWIF Rules)

The appointed judge for a match shall have sole control.

He/She shall be responsible for ensuring:

- that the Rules of "TWIF" are adhered to
- that the rope is laid out ready for competition before the teams arrive in the pulling area
- that, as far as possible, the pre-determined timetable is adhered to.

He/She has the power to;

- grant rest periods as shown in Rule 17
- declare a "No pull"
- disqualify a team or teams after caution.
- disqualify a team without caution which he deems to be guilty of ungentlemanly conduct, by word or act, which is likely to bring the sport into disrepute.

TWIF OFFICIALS

In the event of the judge in charge giving a caution, which he will indicate by the common signal code, naming the team and adding "first caution" or "last caution". Any such instructions given by the judge in charge must be clear and brief using the appropriate signals.

The judge's decision shall be final at all times.

6.2 TASK SIDE JUDGE

(ref. article 25 TWIF Rules)

Side judges shall at all times act under the directions of the judge in charge. During the actual pulling the side judge shall take up a position alongside the competing teams and to the opposite side of the judge in charge. The side judge shall observe the competing teams and indicate the infringements of the teams to the judge in charge, using the common signal code. The side judge will inform the offenders of the cautions given by the judge in charge.

7 CHIEF TIMEKEEPER/RECORDER

The Chief Timekeeper/Recorder is directly responsible to the Controller. The Chief Timekeeper/ Recorder will be responsible for all the other timekeeper/recorders. Assisting should they experience any difficulties. Also ensure that the results are recorded correctly either by use of computer and / or legibly by hand.

7.1 TASK

- Attend all briefings and at the conclusion of the main briefing, be responsible for gathering the timekeeper/recorders together, and with the Controller, brief them on the requirements.
- Liaise with the Controller, on all aspects of the competition. Jointly making the decision on how many timekeeper/recorders will be required for weigh-in as well as the competition start. Check the start time of the competition, and decide with the Controller what time timekeeper/recorders should report to the Arena/Hall. Including nominating personnel for duties on the field to collect Judge's caution cards.
- Ensure that sufficient recording sheets are available for timekeeper/recorders in plenty of time before the start of each competition and each weight class. Also ensure that copies of draw sheets have been given to all other officials.
- Should confusion arise regarding cautions, be ready to immediately confirm with the judge regarding their given cautions on any pull. Delay will only add to the confusion. This action must be taken immediately.
- Ensure that timekeeper/recorders are given 'space and time' when the criteria/call-back system had to be implemented.
- Nearing the end of the competition, ensure that sufficient, pull-off sheets, final sheets and placing sheets are available for timekeeper/recorders. Confirm which ropes these matches will appear on with the Chief Judge or Controller via headset or handset. Ensure that each timekeeper/recorder is fully aware of which match/matches and which rope/ropes will be used.
- Ensure that Control has a full list of placing, for the medal presentations.
- At the end of the competition ensure the results are thoroughly checked before going to admin for inclusion onto disk or into a result book. Also collect each timekeeper/recorder's set of result sheets and place in a folder for future reference, and give to the Controller.

TWIF OFFICIALS

8. TIMEKEEPER/RECORDER

The Timekeeper/Recorder keeps record during the competition of the results of the teams and has full knowledge of relevant sections of the TWIF Rules for International Competitions. The task of recording can be done by one individual or by a pair of two timekeeper/recorders. The Timekeeper/Recorders are responsible to the Chief Timekeeper/Recorder and Controller.

8.1 TASK

The Timekeeper/Recorder shall:

- *after the weigh-in* when so requested assist the Controller with;
 - checking the weigh-in sheets
 - input names of teams in computer programme or on appropriate draw sheets when no computer programme is available
 - copying draw sheets for the competition for the Judges, Marshals, Team Coaches and Timekeeper/Recorders.
 - *during the competition* when so requested assist the Controller with;
 - preparing a list of results in readiness for the presentation of medals/awards.
 - preparing master copy of the results for the organisers for preparation for the result book.
 - report to the Controller at least fifteen to twenty minutes before the competition starts.
- on receipt of the appropriate score sheet report to the allocated recording area.
- once the competition starts record on the score sheet in the appropriate places
 - the times of each pull
 - the cautions accrued
 - the score at the end of the match
 - during the competition keep the score table and the caution table of the TWIF score sheet up to date so at the end of the competition the results can be given to the Chief Timekeeper/Recorder or Controller as soon as possible.
- during the competition, if necessary, record the times of teams coming off their rope at the end of the match, to check the rest period and liaise with the judge and advise accordingly.
- at the end of the qualifying round check the points scored by each team and list the teams in order of placing and advise the Chief Timekeeper/Recorder or Controller on the teams to go forward to the pull-off's
- have applicable details available in case there are teams on equal points and the ranking criteria have to be applied.
- hand the score sheets to the Chief Timekeeper/Recorder or Controller at the end of each competition
- prepare the score sheets for the pull-off's and once the competition is finished pass the results to the Chief Timekeeper/Recorder or Controller.

TWIF OFFICIALS

9. JUDGES' DRESS CODE:

The appropriate TWIF Judges uniform comprises of coat, jumper, shirt, hat & badge **BLACK** dress trousers (see illustration below) must also be worn.



TWIF OFFICIALS

TWIF JUDGES PANEL

1 THE PANEL

The TWIF Panel of Judges is a list of qualified international judges. The judges officiating at international championships will be selected from this list.

2 QUALIFICATION TO BE INCLUDED IN THE TWIF JUDGES PANEL

Before inclusion in the TWIF Panel of Judges, the judges will have to qualify during an official TWIF Judges course with an overall result of 85 percent in the examination.

3 TWIF JUDGES COURSE

National judges will be qualified by a grading system of their national association. The grading consists of three levels, Grade 3, 2 and 1. (Grade 1 is the highest level) Each member association of TWIF can nominate national Grade 1 judges for participation in a TWIF Judges Course. A TWIF Judges Course consists of a session at which the national judges will be instructed on the required international interpretation and implementation of the TWIF Rules for Tug of War. The examination consists of a written examination, as well as a practical test during international competition.

4 REFRESHER COURSES

At each TWIF Judges course a maximum of ten (10) judges from the TWIF Panel of Judges shall retake the TWIF Judges course. The judges from the TWIF Panel of Judges shall be invited by rotation, so all judges on the Panel will be given the opportunity to enhance and improve their judging proficiency. TWIF judges failing to attend the Refresher Course without acceptable justification and TWIF Judges not qualifying in the examination of the Refresher Course will be removed from the TWIF Panel of Judges. In case a TWIF judge, for justifiable reason, is unable to attend a Refresher Course he/ she will take the next available Refresher Course. The maximum period between Refresher Courses for a Judge is six years.

5 CRITIQUE

During TWIF Championships, each and every TWIF Judge will be observed by a qualified person. Instantly after the observation, the judge will be informed on his/her achievement in judging, with the aim to improve the proficiency and performance of the judge. The observer shall be appointed by the TWIF Executive in consultation with the Technical Commission.

6 EVALUATION OF JUDGES

Each TWIF judge will be evaluated during their judging in the championships by three appointed TWIF evaluators. The evaluators will be appointed by the TWIF Executive in consultation with the Technical Commission. The evaluation report will indicate whether the performance of the Judge is in conformity with the required standard or is below standard. The TWIF Judges will be informed on the result of the evaluation by the evaluators. In case a TWIF Judge has been evaluated three times with a proficiency result below standard, he/she will be removed from the Panel of TWIF Judges

TIMEKEEPER RECORDERS PANEL

1 THE PANEL

The TWIF Panel of Timekeeper/Recorders is a list of qualified international recorders

2 QUALIFICATION TO BE INCLUDED IN THE TWIF TIMEKEEPER/RECORDERS PANEL

Before the inclusion in the TWIF Panel of Timekeeper/Recorders, the timekeeper/recorders will have to qualify during an official TWIF Timekeeper/Recorders course

3 TWIF TIMEKEEPER/RECORDERS COURSE

TWIF has held a number of Timekeeper/Recorders Courses

Future courses will also focus on using computer programmes for recording competition results

4 REFRESHER COURSE

In future these courses might be organized to ensure the required proficiency of the timekeeper/recorders officiating at the event.

5. TIMEKEEPER/ RECORDER DRESS CODE

The appropriate TWIF Timekeepers and Recorders Uniform comprises of white jacket, polo shirt, jumper, black trousers or skirt and sensible black shoes.

